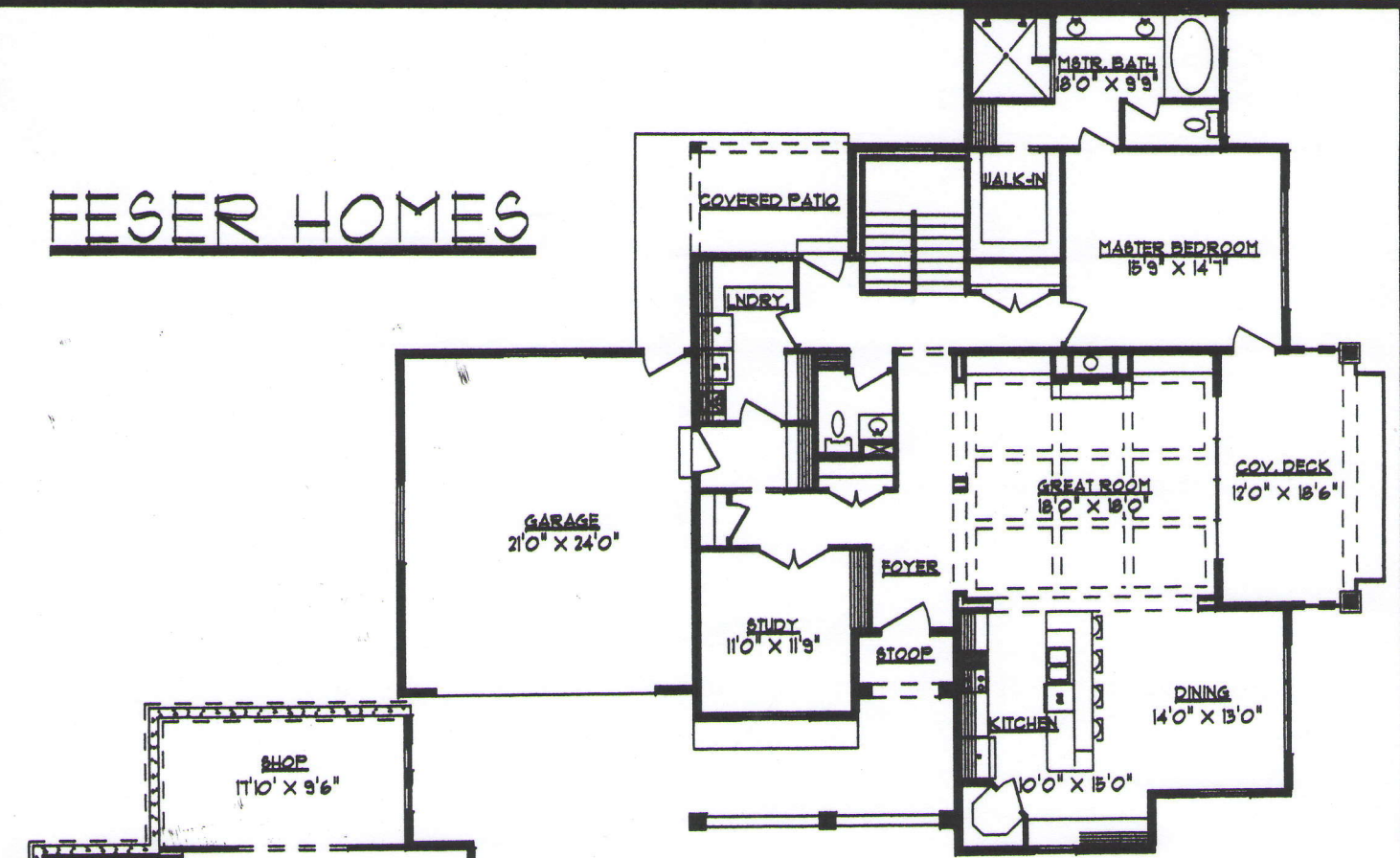
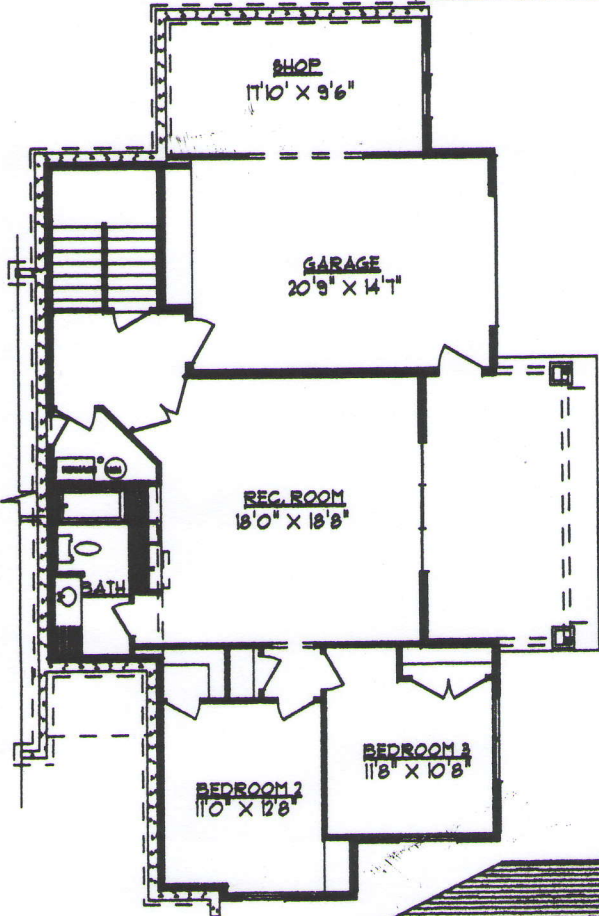


# FESER HOMES

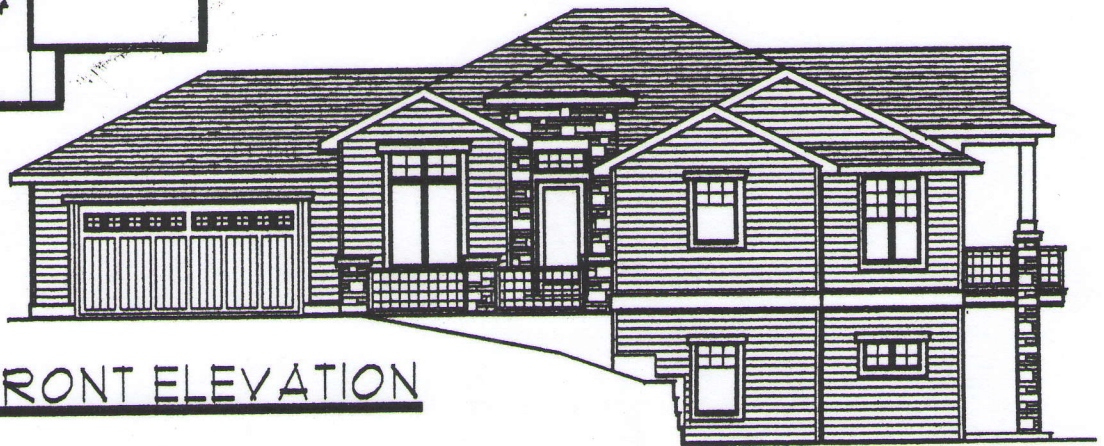


**MAIN FLOOR**



**BASEMENT**

<u>SQUARE FOOTAGE</u>	
MAIN FLOOR	1902 SQ.FT.
BASEMENT	1073 SQ.FT.
<hr/>	
TOTAL	2975 SQ.FT.
UPPER GARAGE	538 SQ.FT.
BASEMENT GRG & SHOP	531 SQ.FT.



**FRONT ELEVATION**